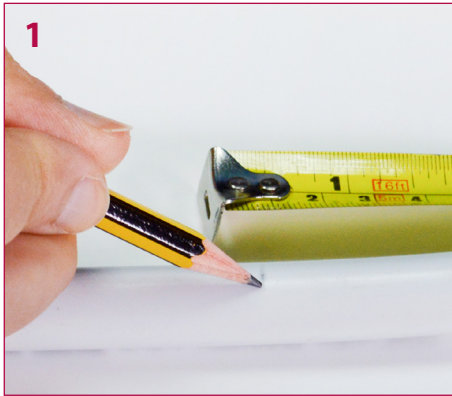


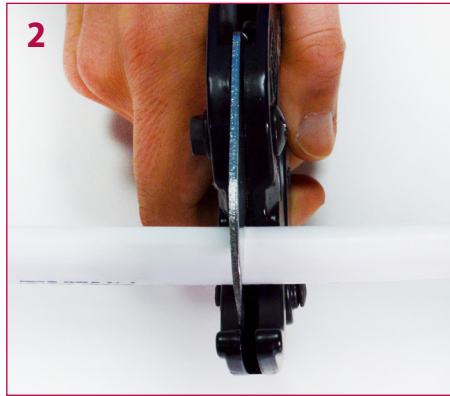
**Hot & Cold
Plumbing Systems**
Installation Guide

FloFit+





1 Measure and mark the required length.



2 Cut the pipe using a pipe cutter.
NOTE: Do not use a hacksaw.



3 To reduce the risk of leaks, ensure you check the cut pipe is free of imperfections.



4 Fit the pipe insert into the pipe.



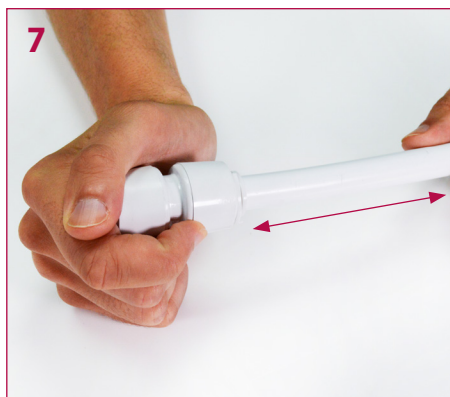
5 Measure and mark the correct insertion depth on the pipe.

| Pipe Size (mm) | Insertion Depth (mm) |
|----------------|----------------------|
| 10 | 23 |
| 15 | 30 |
| 22 | 37 |
| 28 | 45 |

NOTE: A Pipe Insert is required when using a Stem Elbow or Stem Reducer.



6 Insert the pipe into the fitting, ensuring it passes through the O-ring, until it reaches the stop point and correct insertion depth.



7 Check the assembly is secure by pulling the pipe away from the fitting.



8 **NOTE: To identify hot and cold water circuits, red and blue collet clips can be fitted.**



✓ Remove the nut.



✓ Remove brass olive.
NOTE: To connect to a brass copper fitting, a soft copper olive must be used.



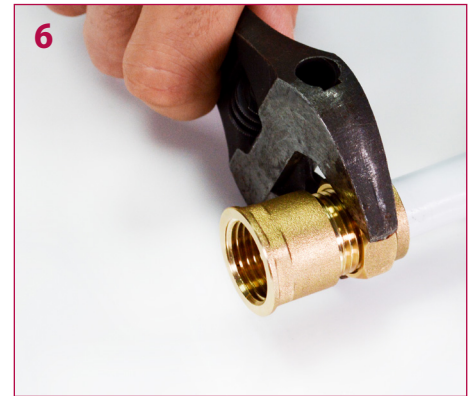
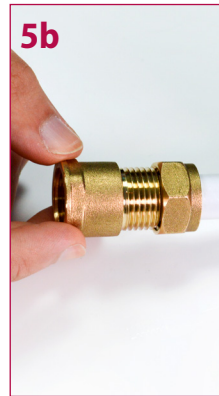
✓ Replace with the soft copper olive.



✓ Fit the pipe insert into the pipe.



✓ Push the pipe into the compression fitting.

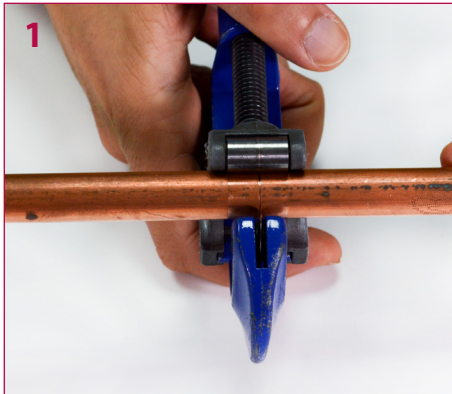


✓ Ensure the nut is tightened sufficiently.

All pipework should be fully supported.

| Pipe Size (mm) | Horizontal Run (mm) | Vertical Run (mm) |
|-------------------|------------------------|----------------------|
| 10 | 300 | 500 |
| 15 | 300 | 500 |
| 22 | 500 | 800 |
| 28 | 500 | 800 |





- 1
- As with plastic pipe, measure and mark the required length. To connect copper, ensure the pipe is cut using a rotational pipe cutter.
- Note: Do not use a hacksaw.**



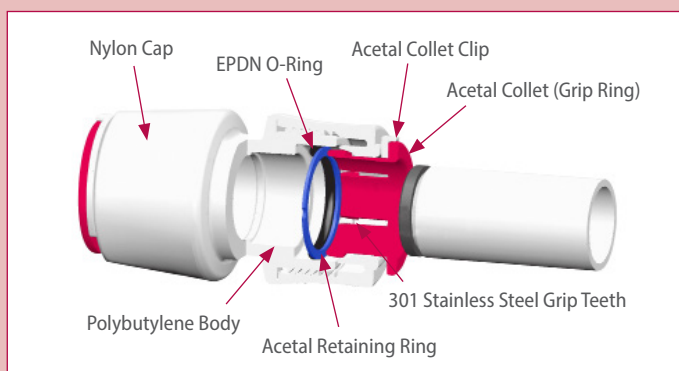
- 2
- To reduce the risk of leaks, ensure you remove any burrs or swarf.



- 3
- As with plastic pipe, ensure the correct insertion depth is achieved when using copper.

System Features

- Lightweight and easy to handle.
- Grip ring seal connection.
- Fully demountable.
- All products supplied with white collet clips (preventing accidental pipe release).
- Coloured red and blue collet clips allow easy identification of hot and cold installations.
- Maintenance free white finish.
- Fittings are WRAS approved for use with plastic and copper pipe and Kitemarked approved to BS 7291 Parts 1, 2 & 3.
- Polybutylene pipe WRAS approved (WRAS Approval No. 1707604).
- PEX pipe WRAS approved (WRAS Approval No. 2009549).



System Benefits

- FloFit+ offers both a Polybutylene Easy-Lay pipe which is flexible and aids installations such as underfloor heating, cabling through awkward, confined and less accessible areas, as well as PEX pipe which is stiffer and ideal for shorter runs where a harder pipe is more suitable.
- Both Polybutylene and PEX pipes are supplied in white.
- Suitable for use with plastic and copper pipes.
- Low conductivity.
- Installation time reduced.
- The risk of fire generated using blowtorches is removed.
- Lead free and non-toxic.
- Excellent chemical resistance.
- Good long-term durability.
- Reduced costs through quicker installation and the use of multi-length pipes.
- Negligible scale build up.
- Reduced water hammer noise.
- Less noise from expansion and contraction caused by water flow.
- Good thermal resistance to freezing conditions.