



FloPlast
wienerberger

SOIL & WASTE SYSTEMS







Soil & Waste Systems

FloPlast offer a comprehensive choice of Soil and Waste systems and products, in a range of sizes and colours, to suit all tastes and applications.

FloPlast 32/40/50mm ABS Solvent Weld, 110mm Solvent and Ring Seal Soil Products have been awarded the BSI Kitemark.

The FloPlast 'Cast Iron' Style Soil Systems offer the authentic look of Cast Iron with all the benefits of PVC. This soil system complements the well-established Half Round, Niagara & Hi-Cap 'Cast Iron' Style Rainwater Systems.

Range Benefits



Consistent Colour Finish



Tough & Durable



Lightweight Design



Great Chemical Compatibility

Accreditations



Please note when ordering:
Add the colour reference code to your order

B Black **W** White **OG** Olive Grey **G** Grey **AG** Anthracite Grey **CI** Cast Iron Style **CH** Chrome





AIR ADMITTANCE VALVES

Standard: BS EN 12380 Kitemark: 512474 Material: PVC-U



The FloPlast Air Admittance Valve is designed to allow the free entry of air into the sanitary pipework system without the escape of foul gasses into the building.

When installed into sanitary pipework systems conforming to BS EN 12056, the FloPlast Air Admittance Valve not only prevents the loss of water from trap seals due to induced siphonage, but also has the added advantage of providing an early warning indicator to a potential drainage blockage.

The AF110 Push-fit Air Admittance Valve may also be used as a secondary rodding point to remove such blockages.

All valves should be stored/installed in an upright position.

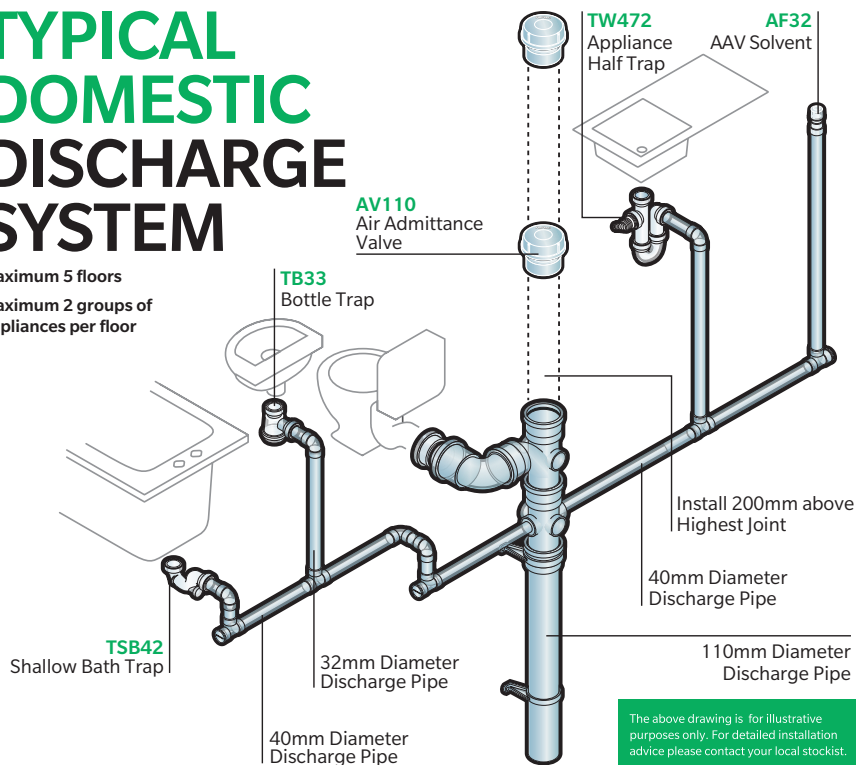
The AF32 Air Admittance Valve has a universal adaptor to fit to 32mm/40mm/50mm solvent waste pipe. It is produced from white ABS/PVC, and is designed for use with waste pipe connected to a solvent cemented pipe adaptor supplied with the product.

Approved Document H of the Building Regulations only permits Air Admittance Valves that conform to BS EN 12380. Ventilation and access must be provided to all air admittance valve installations.

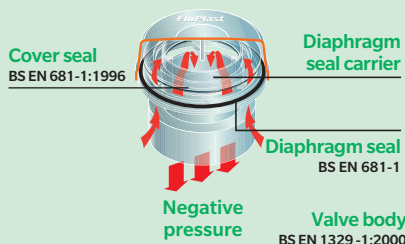
Further information on FloPlast Air Admittance Valves is available from the BSI detailed sheet which is downloadable from our website: www.floplast.co.uk

TYPICAL DOMESTIC DISCHARGE SYSTEM

Maximum 5 floors
Maximum 2 groups of appliances per floor



AAV VALVE OPEN (NEGATIVE PRESSURE IN PIPEWORK)



AAV VALVE CLOSED (NORMAL WORKING CONDITIONS)





▪ **Function**

Allows air to enter plumbing drainage systems to equalise pressure and prevent trap siphoning.

▪ **No Roof Penetration**

Eliminates the need for vent pipes through the roof, simplifying the installation and giving a more aesthetic design to your installation.

▪ **One-Way Valve**

Opens to admit air when negative pressure occurs, then closes to prevent foul air escape.

▪ **Quiet Operation**

Operates silently without causing gurgling noises in drains.

▪ **Rodding**

Can be used as a secondary rodding point.

▪ **Varieties**

Compatible with 32/40/50/82/110mm pipe sizes with compression, solvent and push-fit connections.

Air Admittance Valve Solvent



Size	Colour	Code
32/40/50mm	<input type="checkbox"/> W	AF32

Push Fit Air Admittance Valve



Size	Colour	Code
110/82mm	<input type="checkbox"/> B <input type="checkbox"/> W <input type="checkbox"/> G <input type="checkbox"/> AG	AF110

External Air Admittance Valve



Size	Colour	Code
110/82mm	<input type="checkbox"/> B <input type="checkbox"/> W <input type="checkbox"/> G <input type="checkbox"/> AG	AX110

Air Admittance Valve Compression

32mm



Colour	Code
<input type="checkbox"/> W	AV32

40mm



Colour	Code
<input type="checkbox"/> W	AV40

50mm



Colour	Code
<input type="checkbox"/> W	AV50

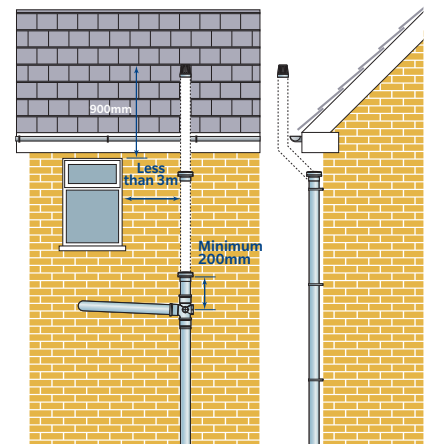
Solvent Air Admittance Valve



Size	Colour	Code
110mm	<input type="checkbox"/> B <input type="checkbox"/> W <input type="checkbox"/> G <input type="checkbox"/> AG	AV110



Document H Clause 1.31 states that “Ventilating pipes open to outside air should finish at least 900mm above any opening into the building within 3 metres”. FloPlasts External Air Admittance Valve will allow the installation of an external soil pipe within 3 metres of any opening and terminate at the same height as if it were installed internally, i.e. 200mm (minimum) above the highest wet entry point to the soil vent pipe. See diagram below.





SOIL - WC CONNECTORS

Standard: BS EN 1329-1, BS 5627 **Material:** Polypropylene

- Low maintenance.
- Made in polypropylene they are supplied with an integral sealing diaphragm which allows for up to 5° misalignment in any direction.
- Where space is restricted, our flexible pan connector (code SP106) can be used.
- Helps prevent stack induced siphonage on connecting runs.

Swan Neck



Colour

W

Code

SP100

Offset



Colour

W

Code

SP102

250mm Extension



Colour

W

Code

SP104

Straight



Colour

W

Code

SP101

90° Bend



Colour

W

Code

SP103

Flexible



Colour

W

Code

SP106

14° Connector



Colour

W

Code

SP108





SOIL & WASTE FIXING GUIDE Install and test system in accordance with BS EN 1610.

Commence the stack from the base and work up. Mark the position of the brackets and drill and fix screws before erecting.

Fix pipe or socket brackets at maximum 2m centres vertical and at maximum 1m centres horizontal.

An allowance for expansion should be made by withdrawing all pipe and fitting spigots from the sockets by 10mm.

Soil Fittings with spigot ends can be inserted into the socket to depth marks engraved on the spigot, this ensures correct allowance is made for

expansion. Expansion joints should be incorporated every 4m.

The use of silicone lubricant on all seals will facilitate jointing.

The system should incorporate suitable access points to enable testing and maintenance of the system.

BOSS ADAPTORS



Solvent Weld Connection to ABS

32mm	40mm	50mm
SP20	SP21	SP22

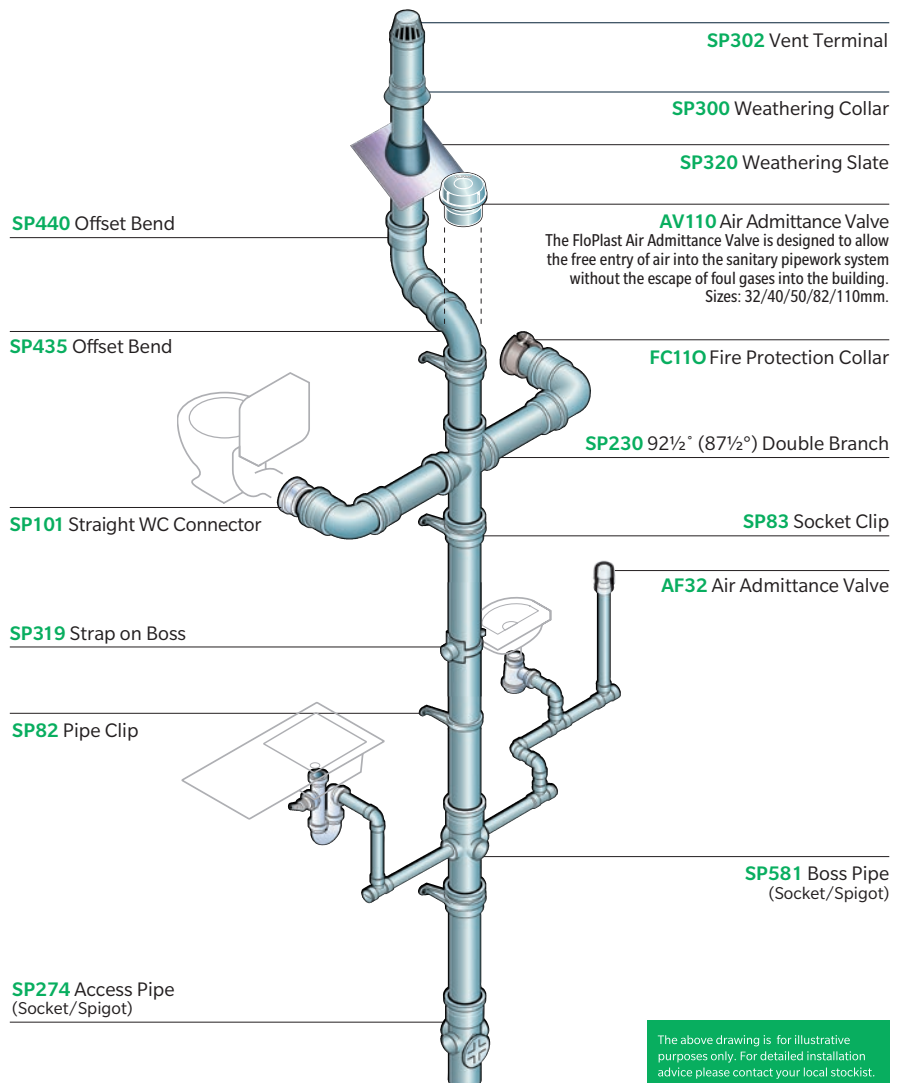


Straight Push-fit Connection to Push-fit Waste or Solvent Weld Waste

32mm	40mm	50mm
SP10	SP11	SP12

FIRE COLLAR APPLICATION

Used to seal PVC-U pipes as they pass through cavity walls and floors. In a fire the intumescent lining reacts to extreme heat which expands and blocks a potential fire path.

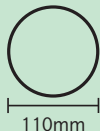


The above drawing is for illustrative purposes only. For detailed installation advice please contact your local stockist.



110mm RING SEAL SOIL PIPE AND FITTINGS

Standard: BS EN 1329-1, BS EN 1453-1 Kitemark: 544331 Material: PVC-U



110mm



Plain Ended Pipe



Size	Colour	Code
3m	B W G AG	SP1
4m	B	SP2

Single Socket Pipe



Size	Colour	Code
1m	B W G	SP8
2.5m	B G	SP7
3m	B W G AG	SP3
4m	B W G	SP4



▪ **Watertight Seal**

The integrated rubber ring provides a watertight and airtight seal, which prevents leaks and odors from escaping the pipe system.

▪ **Flexibility in System Design**

Allows for slight movement in pipework without breaking the seal. Especially useful in buildings that may experience minor ground movement or settling.

▪ **Push-fit connection**

No solvent welding or special tools are required.

▪ **Time and Labour Saving**

Faster to install than solvent weld systems, reducing labour costs and project duration.

▪ **Standard Compatibility**

The 110mm size is the UK standard for soil pipes, making it compatible with most fittings, connectors, and accessories.

▪ **Durable and Long-Lasting**

Made from PVC-U, which is resistant to corrosion, chemicals, and UV degradation.

Pipe Clip



Colour

Code

B **W** **G** **AG**

SP82

Socket Clip



Colour

Code

B **G**

SP83

Pipe Coupling - Double Socket



Colour

Code

B **W** **G** **AG**

SP105

Pipe Coupling - Single Socket



Colour

Code

B **W** **G** **AG**

SP124

92½° (87½°) Bend - Socket/Spigot



Colour

Code

B **W** **G** **AG**

SP161

92½° (87½°) Bend - Double Socket



Colour

Code

B **W** **G** **AG**

SP561

112½° (67½°) Bend - Socket/Spigot



Colour

Code

B **W** **G**

SP162

135° (45°) Bend - Socket/Spigot



Colour

Code

B **W** **G** **AG**

SP163

135° (45°) Bend - Double Socket



Colour

Code

B **W** **G** **AG**

SP563

92½° (87½°) Access Bend



Colour

Code

B **W** **G** **AG**

SP169

135° (45°) Offset Bend with Solvent Bottom



Colour

Code

B **W** **G**

SP440

135° (45°) Offset Bend Spigot/Solvent Socket



Colour

Code

B **W** **G**

SP435



- **BS EN 1329 - 1** – Plastics piping systems for soil and waste discharge (low and high temperature) within the building structure. (Unplasticised polyvinyl chloride) (PVC-U). KM 544331
- **BS EN 681-1** – Elastomeric seals. Material requirements for pipe joint seals used in water and drainage applications. Thermoplastic elastomers.
- **BS EN 1453** – Plastics piping systems with structured-wall pipes for soil and waste discharge (low and high temperature) inside buildings. Unplasticised polyvinyl chloride (PVC-U). Specifications for pipes and the system
- **BS EN 1366 - 3** – Fire resistance tests for service installations. Penetration seals.

0-90° Adjustable Bend - do not solvent weld



Colour	Code
<input type="checkbox"/> B <input type="checkbox"/> W <input type="checkbox"/> G <input type="checkbox"/> AG	SP560

135° (45°) Branch



Colour	Code
<input type="checkbox"/> B <input type="checkbox"/> W <input type="checkbox"/> G	SP210

Screwed Access Cap



Colour	Code
<input type="checkbox"/> B <input type="checkbox"/> W <input type="checkbox"/> G <input type="checkbox"/> AG	SP292

92½° (87½°) Branch



Colour	Code
<input type="checkbox"/> B <input type="checkbox"/> W <input type="checkbox"/> G <input type="checkbox"/> AG	SP190

92½° (87½°) Double Branch



Colour	Code
<input type="checkbox"/> B <input type="checkbox"/> W <input type="checkbox"/> G <input type="checkbox"/> AG	SP230

Socket Plug



Colour	Code
<input type="checkbox"/> B <input type="checkbox"/> W <input type="checkbox"/> G <input type="checkbox"/> AG	SP296

92½° (87½°) Triple Socket Branch



Colour	Code
<input type="checkbox"/> B <input type="checkbox"/> W <input type="checkbox"/> G <input type="checkbox"/> AG	SP191

92½° (87½°) Corner Branch



Colour	Code
<input type="checkbox"/> B <input type="checkbox"/> W <input type="checkbox"/> G <input type="checkbox"/> AG	SP232

Strap Boss



Colour	Code
<input type="checkbox"/> B <input type="checkbox"/> W <input type="checkbox"/> G <input type="checkbox"/> AG	SP319

112½° (67½°) Branch



Colour	Code
<input type="checkbox"/> B <input type="checkbox"/> W <input type="checkbox"/> G	SP200

92½° (87½°) Access Branch



Colour	Code
<input type="checkbox"/> B <input type="checkbox"/> W <input type="checkbox"/> G <input type="checkbox"/> AG	SP502

Boss Pipe - Socket/Spigot



Colour	Code
<input type="checkbox"/> B <input type="checkbox"/> W <input type="checkbox"/> G	SP581



Boss Pipe - Socket/Solvent Socket



Colour



Code

SP582

Short Boss Pipe



Colour



Code

SP583

Soil Manifold - 32/40/50mm Connections



Colour



Code

SP588

Weathering Collar



Colour



Code

SP300

Vent Terminal



Colour



Code

SP302

Extract Cowl



Colour



Code

SP310

Weathering Slate 500x600mm



Colour

-

Code

SP320

110mm Fire Protection Collar



Colour

-

Code

FC110

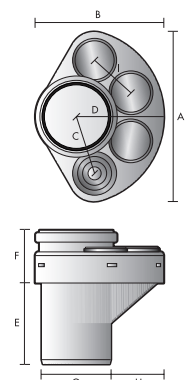
SOIL MANIFOLD

The FloPlast Soil Manifold is designed to be installed in a soil stack in the corner of a room.

- Helps prevent stack induced siphonage on connecting runs.
- Prevents crossflow design problems.
- 32mm, 40mm, and 50mm connections possible in all inlets.
- Simple push-fit connection for all waste pipes.



DIMENSIONS (mm)	A	268
	B	210
	C	102
	D	149
	E	132
	F	85
	G	110 \emptyset
	H	89
	I	75





110mm RING SEAL SOIL REDUCERS AND ADAPTORS

Standard: BS EN 1329-1, BS EN 1453-1 Kitemark: 544331 Material: PVC-U

Ring Seal

A rubber-sealed joint that provides a secure, push-fit connection between pipes without the need for solvent welding or mechanical fixings.

Adaptor

Joins different types of pipes (e.g., soil to waste pipes) or converts between push-fit and solvent-weld systems.

Reducer

Connects 110mm pipe to a smaller diameter pipe such as 68mm, 50mm, 40mm, and 32mm.

32mm Boss Adaptor - Push-Fit



Information

Black Rubber

Code

SP10

40mm Boss Adaptor - Solvent



Colour

B **W** **G** **AG**

Code

SP21

110x82mm Soil Reducer



Colour

G

Code

SP97

40mm Boss Adaptor - Push-Fit



Information

Black Rubber

Code

SP11

50mm Boss Adaptor - Solvent



Colour

B **W** **G**

Code

SP22

Universal Waste Adaptor - 32/40/50mm



Colour

N/A

Code

D95

50mm Boss Adaptor - Push-Fit



Information

Black Rubber

Code

SP12

110mm Waste Adaptor - Use boss Adaptors



Colour

B **W** **G**

Code

SP95

Drain Connector



Colour

B **G**

Code

SP107

32mm Boss Adaptor - Solvent



Colour

B **W** **G** **AG**

Code

SP20

110x68mm Rainwater Reducer



Colour

B **W** **G**

Code

SP96

Soil/Clay/Drainage Pipe Adaptor



Colour

B **G**

Code

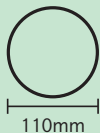
SP140





"CAST IRON" STYLE 110mm RING SEAL SOIL PIPE AND FITTINGS

Standard: BS EN 1329-1, BS EN 1453-1 Material: PVC-U



Plain Ended Pipe



Size	Colour	Code
1.8m	ci	SP9

8mm Pipe Spacer Bracket



Colour	Code
ci	SP89

Pipe Coupling



Colour	Code
ci	SP115

Strap Boss



Colour	Code
ci	SP319

Pipe Clip



Colour	Code
ci	SP84

110mm Vent Terminal



Colour	Code
ci	SP302

110mm Weathering Collar



Colour	Code
ci	SP300



▪ **Classic Appearance**

Designed to replicate traditional cast iron Soil pipe and fittings – ideal for heritage or period properties. All sockets come complete with a "Cast Iron" Style socket shroud.

▪ **Modern Materials**

Made from durable uPVC, combining the look of cast iron with modern performance.

▪ **Push-fit connection**

Push-fit system with pre-lubricated rubber seals. Enables quick, leak-free installation. No need for solvent welding or mechanical fixings.

▪ **Standard Compatibility**

The 110mm size is the UK standard for soil pipes, making it compatible with most fittings, connectors, and accessories.

92½° (87½°) Bend - Socket/Spigot



Colour	Code
ci	SP161

Access Bend - Socket Spigot



Colour	Code
ci	SP169

Access Pipe - Socket Spigot



Colour	Code
ci	SP274

92½° (87½°) Bend - Double Socket



Colour	Code
ci	SP561

Double Branch



Colour	Code
ci	SP230

Boss Pipe - Socket Spigot



Colour	Code
ci	SP581

135° (45°) Bend - Socket/Spigot



Colour	Code
ci	SP163

92½° (87½°) Branch - with side bosses



Colour	Code
ci	SP190

Weathering Slate 500x600mm



Colour	Code
-	SP320

135° (45°) Bend - Double Socket



Colour	Code
ci	SP563

92½° (87½°) Branch



Colour	Code
ci	SP192

Cast Iron Fixings

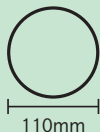


Colour	Code
ci	FC65



110mm SOLVENT SOIL PIPE AND FITTINGS

Standard: BS EN 1329-1, BS EN 1453-1 Kitemark: 544331 Material: PVC-U



110mm

Plain Ended Pipe



Size	Colour	Code
3m	B OG	SS1
4m	B OG	SS2

Pipe Clip



Colour	Code
B OG	SS82

135° (45°) Offset Bend - Socket/Spigot



Colour	Code
B OG	SS435

Pipe Coupling - Double Socket



Colour	Code
B OG	SS106

92½° (87½°) Bend - Double Socket



Colour	Code
B OG	SS561

Pipe Coupling - Solvent/Ring Seal



Colour	Code
B OG	SS107

135° (45°) Bend - Double Socket



Colour	Code
B OG	SS563

135° (45°) Offset Bend - Ring Seal Top



Colour	Code
B OG	SS440

90° Bend - Socket/Spigot



Colour	Code
B OG	SS169



• **Material**

Manufactured with high-quality PVC-U, resistant to corrosion, chemicals and UV degradation making it suitable for both internal and external applications.

• **Application**

Ideal for soil drainage systems from toilets, sinks, baths, and showers.

• **Standard Compatibility**

The 110mm size is the UK standard for soil pipes, making it compatible with most fittings, connectors, and accessories.

• **Installation**

Requires solvent cement (sold separately); easy to cut and join with minimal tools.

• **BS EN Standards**

Manufactured to British and European standards for quality and performance.

• **Solvent Weld**

Ensures watertight joints, reducing risk of leaks.

92½° (87½°) Access Bend - Double Socket



Colour	Code
B OG	SS569

92½° (87½°) Branch - Triple Socket



Colour	Code
B OG	SS503

Strap Boss



Colour	Code
B OG	SS319

92½° (87½°) Access Branch - Triple Socket



Colour	Code
B OG	SS503

135° (45°) Branch - Triple Socket



Colour	Code
B OG	SS211

32mm Boss Adaptor



Colour	Code
B OG	SS20

Access Pipe



Colour	Code
B OG	SS275

110mm Vent Terminal



Colour	Code
B OG	SS302

40mm Boss Adaptor



Colour	Code
B OG	SS21

Screwed Access Cap



Colour	Code
B OG	SS292

Short Boss Pipe



Colour	Code
B OG	SS583

50mm Boss Adaptor



Colour	Code
B OG	SS22



MASTER3PLUS ACOUSTIC SOIL & WASTE PIPE AND FITTINGS

Soil and waste pipes are essential service technology in buildings, but they can be noisy and disruptive.

Pipelife's state-of-the-art acoustic soil and waste pipe system, Master3Plus, is made to meet today's construction and housing challenges in terms of quality, sound insulation, ease of installation and service life. Three functional pipe layers, top-quality material, and a well-thought-out product design deliver tangible benefits for designers, installers, investors as well as dwellers.





HEAR THE DIFFERENCE

Market-leading sound insulation

Master3Plus, Pipelife's premium polypropylene (PP) soil and waste piping system, effectively reduces airborne as well as structure-borne noise. This has been tested by the Fraunhofer Institute in Germany. Results show that Master3Plus is one of the quietest soil and waste pipe systems available on the European market.

Optimised acoustic properties

When choosing an acoustic soil and waste piping system, we strongly recommend taking the sound-absorbing properties of the complete piping system, its hydraulic design as well as adequate sound barriers (fastening) into consideration.

Sound is produced through vibrations that travel as waves either by air or matter. In building acoustics, these are referred to as air and structure-borne sound. While good pipe and wall insulation will minimize noise transmission within a space, the progression of structure-borne sound is more difficult to contain as it is transferred over walls and building structures to adjacent spaces.

Master3Plus successfully minimises the development and propagation of air and structure-borne noise and qualifies as one of the quietest soil and waste piping systems on the European market.

Standardised tests for comparability

For you to take our claims seriously, to ensure comparability, and for us to further improve our system's acoustic quality, we subject Master3Plus to standardised third-party acoustic tests in addition to stringent in-house laboratory testing.

Conducted at the independent testing institute Fraunhofer in Stuttgart, Germany, acoustic tests on Master3Plus are performed in reference to EN 14366 and with different fastening clamps in accordance with DIN 4109 and VDI 4100.

Pipelife's Master3Plus soil and waste pipe systems exceed the requirements for sound insulation of technical equipment in buildings and keep the installation sound level according to VDI 4100 below 10 dB(A).

Easier, faster and safer installation

Flow-optimised design

Quiet flow

Reliably tight

UV improved protection

Easier inspection and maintenance

Excellent sound insulation; high rigidity and robustness

- > Economic use of materials and waste reduction
- > Secure installation well below zero degrees
- > Fit for multiple application areas





110mm MASTER3PLUS ACOUSTIC SOIL PIPE AND FITTINGS

Standard: EN 1451-1 Acoustic Test: EN 14366/ DIN 4109/ VDI 4100 Material: Polypropylene



Single Socket Pipe



Length	Colour	Code
1m	B	SA1
2m	B	SA2
3m	B	SA3

Silent Clamp Double



Colour	Code
B	SA83

Silent Clamp Single



Colour	Code
B	SA82

Socket Plug



Colour	Code
B	SA296

Double Socket Coupler



Colour	Code
B	SA105

Long Socket Coupler



Colour	Code
B	SA124

Access Pipe



Colour	Code
B	SA274

87½° Single Socket Bend



Colour	Code
B	SA161

87½° Double Socket Bend



Colour	Code
B	SA561

67½° Single Socket Bend



Colour	Code
B	SA220

45° Single Socket Bend



Colour	Code
B	SA163



- Sound Insulation**
 One of the quietest soil pipe systems available.
- Watertight Seal**
 The integrated rubber ring provides a watertight and airtight seal, which prevents leaks and odors from escaping the pipe system.
- Push-fit connection**
 No solvent welding or special tools are required.
- Durable and Long-Lasting**
 Made from Polypropylene, which is resistant to corrosion, chemicals, and has improved UV protection.
- Time and Labour Saving**
 Faster to install than solvent weld systems, reducing labour costs and project duration.

45° Double Socket Bend



Colour

B

Code

SA563

30° Single Socket Bend



Colour

B

Code

SA164

15° Single Socket Bend



Colour

B

Code

SA167

87½° Single Socket Long Bend



Colour

B

Code

SA281

87½° Double Socket Long Bend



Colour

B

Code

SA571

87½° Swept Branch



Colour

B

Code

SA190

87½° Reducing Branch 110 - 50mm



Colour

B

Code

SA19050

87½° Triple Socket Reducing Branch 110 - 50mm



Colour

B

Code

WA87RTS

87½° Triple Socket Swept Branch



Colour

B

Code

SA191

67½° Branch



Colour

B

Code

SA200

67½° Reducing Branch 110 - 50mm



Colour

B

Code

WA67R

45° Branch



Colour

B

Code

SA181



110mm MASTER3PLUS ACOUSTIC SOIL PIPE AND FITTINGS

Standard: EN 1451-1 Acoustic Test: EN 14366/ DIN 4109/ VDI 4100 Material: Polypropylene



45° Reducing Branch 110 - 50mm



Colour

B

Code

SA21050

87½° Corner Branch



Colour

B

Code

SA232

90° Siphon Adaptor Elbow 50mm



Colour

B

Code

SA12

45° Triple Socket Branch



Colour

B

Code

SA581

Ventilation Branch



Colour

B

Code

SAV110

Siphon Adaptor Straight 50mm



Colour

B

Code

SA32

87½° Reducing Double Branch 110 - 50mm



Colour

B

Code

WA58R

90° Siphon Adaptor Elbow 40mm



Colour

B

Code

SA11

87½° Double Branch 110 - 110mm



Colour

B

Code

SA230

Siphon Adaptor Straight 40mm



Colour

B

Code

SA31



160/110/50mm MASTER3PLUS REDUCERS

Standard: EN 1451-1 Material: Polypropylene



Reducer 160 - 110mm



Colour

B

Code

SA99

Short Reducer 50 - 40mm



Colour

B

Code

WA40R

Eccentric Reducer 50 - 40mm



Colour

B

Code

WA50R

Reducer 110 - 50mm



Colour

B

Code

SA95

Internal Reducer 110 - 50mm



Colour

B

Code

WA82R

Short Reducer 110 - 50mm



Colour

B

Code

WA42R

Internal Reducer 110 - 40mm



Colour

B

Code

WA81R

Short Reducer 110 - 40mm



Colour

B

Code

WA41R

Internal Reducer 50 - 40mm



Colour

B

Code

WA80R





160mm MASTER3PLUS ACOUSTIC SOIL PIPE AND FITTINGS

Standard: EN 1451-1 Acoustic Test: EN 14366/ DIN 4109/ VDI 4100 Material: Polypropylene



Plain Ended Pipe



Size	Colour	Code
3m	B	6SA3

Silent Clamp Double



Colour	Code
B	6SA83

Silent Clamp Single



Colour	Code
B	6SA82

Double Socket Coupler



Colour	Code
B	6SA105

87½° Single Socket Bend



Colour	Code
B	6SA161

45° Single Socket Bend



Colour	Code
B	6SA163

30° Single Socket Bend



Colour	Code
B	6SA164

15° Single Socket Bend



Colour	Code
B	6SA167

87½° Branch



Colour	Code
B	6SA190

87½° Reducing Branch 160 - 110mm



Colour	Code
B	6SA198

45° Branch



Colour	Code
B	6SA210

45° Reducing Branch 160 - 110mm



Colour	Code
B	6SA218



- **Sound Insulation**

One of the quietest soil pipe systems available.

- **Watertight Seal**

The integrated rubber ring provides a watertight and airtight seal, which prevents leaks and odors from escaping the pipe system.

- **Push-fit connection**

No solvent welding or special tools are required.

- **Durable and Long-Lasting**

Made from Polypropylene, which is resistant to corrosion, chemicals, and has improved UV protection.

- **Time and Labour Saving**

Faster to install than solvent weld systems, reducing labour costs and project duration.

Socket Plug



Colour	Code
B	6SA296

Access Pipe



Colour	Code
B	6SA274





40mm MASTER3PLUS ACOUSTIC WASTE PIPE AND FITTINGS

Standard: EN 1451-1 Acoustic Test: EN 14366 Material: Polypropylene



Plain Ended Pipe



Size	Colour	Code
3m	B	WA02

Socket Plug



Colour	Code
B	WA31

87½° Double Socket Bend



Colour	Code
B	WA15DS

Socketed Pipe



Size	Colour	Code
2m	B	WAS2

30° Single Socket Bend



Colour	Code
B	WA05

45° Single Socket Bend



Colour	Code
B	WA19

Double Socket Coupler



Colour	Code
B	WA08

67½° Single Socket Bend



Colour	Code
B	WA13

45° Double Socket Bend



Colour	Code
B	WA19DS

Long Coupler



Colour	Code
B	WA08L

87½° Single Socket Bend



Colour	Code
B	WA15

87½° Branch



Colour	Code
B	WA23



- **Sound Insulation**

One of the quietest waste pipe systems available.

- **Watertight Seal**

The integrated rubber ring provides a watertight and airtight seal, which prevents leaks and odors from escaping the pipe system.

- **Push-fit connection**

No solvent welding or special tools are required.

- **Durable and Long-Lasting**

Made from Polypropylene, which is resistant to corrosion, chemicals, and has improved UV protection.

- **Time and Labour Saving**

Faster to install than solvent weld systems, reducing labour costs and project duration.

87½° Triple Socket Branch



Colour	Code
B	WA23TS

45° Branch



Colour	Code
B	WA42

45° Triple Socket Branch



Colour	Code
B	WA42TS

45° Reducing Branch 40-32mm



Colour	Code
B	WA39R





50mm MASTER3PLUS ACOUSTIC WASTE PIPE AND FITTINGS

Standard: EN 1451-1 Acoustic Test: EN 14366 Material: Polypropylene



Plain Ended Pipe



Size	Colour	Code
3m	B	WA03

Socket Plug



Colour	Code
B	WA32

45° Double Socket Bend



Colour	Code
B	WA20DS

Socketed Pipe



Size	Colour	Code
2m	B	WAS3

15° Single Socket Bend



Colour	Code
B	WA04

67½° Single Socket Bend



Colour	Code
B	WA17

Double Socket Coupler



Colour	Code
B	WA09

30° Single Socket Bend



Colour	Code
B	WA06

87½° Single Socket Bend



Colour	Code
B	WA16

Long Coupler



Colour	Code
B	WA09L

45° Single Socket Bend



Colour	Code
B	WA20

87½° Double Socket Bend



Colour	Code
B	WA16DS



▪ **Sound Insulation**

One of the quietest waste pipe systems available.

▪ **Watertight Seal**

The integrated rubber ring provides a watertight and airtight seal, which prevents leaks and odors from escaping the pipe system.

▪ **Push-fit connection**

No solvent welding or special tools are required.

▪ **Durable and Long-Lasting**

Made from Polypropylene, which is resistant to corrosion, chemicals, and has improved UV protection.

▪ **Time and Labour Saving**

Faster to install than solvent weld systems, reducing labour costs and project duration.

87½° Single Socket Long Radius Bend



Colour	Code
B	WA16L

87½° Reducing Branch 50-40mm



Colour	Code
B	WA23R

45° Reducing Branch 50-40mm



Colour	Code
B	WA44R

87½° Double Socket Long Radius Bend



Colour	Code
B	WA16LDS

67½° Branch



Colour	Code
B	WA25

Access Pipe



Colour	Code
B	WA92

87½° Branch



Colour	Code
B	WA24

45° Branch



Colour	Code
B	WA44

87½° Branch Triple Socket

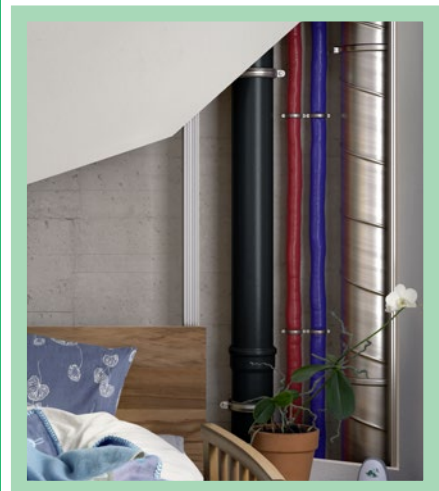


Colour	Code
B	WA87TS

45° Branch Triple Socket



Colour	Code
B	WA44TS





32/40/50mm ABS SOLVENT WELD

Standard: BS EN 1455-1 Kitemark: 548614 Material: Acrylonitrile Butadiene Styrene (ABS)



3m Wastepipe



Size	Colour	Code
32mm	<input type="checkbox"/> B <input type="checkbox"/> W <input type="checkbox"/> G <input type="checkbox"/> AG	WS01
40mm	<input type="checkbox"/> B <input type="checkbox"/> W <input type="checkbox"/> G <input type="checkbox"/> AG	WS02
50mm	<input type="checkbox"/> B <input type="checkbox"/> W <input type="checkbox"/> G	WS03

90° Bend



Size	Colour	Code
32mm	<input type="checkbox"/> B <input type="checkbox"/> W <input type="checkbox"/> G <input type="checkbox"/> AG	WS10
40mm	<input type="checkbox"/> B <input type="checkbox"/> W <input type="checkbox"/> G <input type="checkbox"/> AG	WS11
50mm	<input type="checkbox"/> B <input type="checkbox"/> W <input type="checkbox"/> G	WS12

92½° (87½°) Tee



Size	Colour	Code
32mm	<input type="checkbox"/> B <input type="checkbox"/> W <input type="checkbox"/> G <input type="checkbox"/> AG	WS22
40mm	<input type="checkbox"/> B <input type="checkbox"/> W <input type="checkbox"/> G <input type="checkbox"/> AG	WS23
50mm	<input type="checkbox"/> B <input type="checkbox"/> W <input type="checkbox"/> G	WS24

Straight Coupling



Size	Colour	Code
32mm	<input type="checkbox"/> B <input type="checkbox"/> W <input type="checkbox"/> G <input type="checkbox"/> AG	WS07
40mm	<input type="checkbox"/> B <input type="checkbox"/> W <input type="checkbox"/> G <input type="checkbox"/> AG	WS08
50mm	<input type="checkbox"/> B <input type="checkbox"/> W <input type="checkbox"/> G	WS09

92½° (87½°) Bend



Size	Colour	Code
32mm	<input type="checkbox"/> B <input type="checkbox"/> W <input type="checkbox"/> G <input type="checkbox"/> AG	WS14
40mm	<input type="checkbox"/> B <input type="checkbox"/> W <input type="checkbox"/> G <input type="checkbox"/> AG	WS15
50mm	<input type="checkbox"/> B <input type="checkbox"/> W <input type="checkbox"/> G	WS16

90° Conversion Bend



Size	Colour	Code
32mm	<input type="checkbox"/> B <input type="checkbox"/> W <input type="checkbox"/> G <input type="checkbox"/> AG	WS26
40mm	<input type="checkbox"/> B <input type="checkbox"/> W <input type="checkbox"/> G <input type="checkbox"/> AG	WS27
50mm	<input type="checkbox"/> B <input type="checkbox"/> W <input type="checkbox"/> G	WS28

135° (45°) Bend



Size	Colour	Code
32mm	<input type="checkbox"/> B <input type="checkbox"/> W <input type="checkbox"/> G <input type="checkbox"/> AG	WS18
40mm	<input type="checkbox"/> B <input type="checkbox"/> W <input type="checkbox"/> G <input type="checkbox"/> AG	WS19
50mm	<input type="checkbox"/> B <input type="checkbox"/> W <input type="checkbox"/> G	WS20

135° Conversion Bend



Size	Colour	Code
32mm	<input type="checkbox"/> B <input type="checkbox"/> W <input type="checkbox"/> G	WS76
40mm	<input type="checkbox"/> B <input type="checkbox"/> W <input type="checkbox"/> G	WS77



- A lightweight yet strong and cost effective option compared to traditional metal pipe and fittings.
- Available in 32mm, 40mm and 50mm sizes with an extensive range of fittings to meet most installation requirements.
- Has a permanent joint making it less likely to leak and is very durable.
- Smooth internal bore help to improve flow and reduce blockages.
- Use SC125/SC250 Solvent Cement for jointing ABS pipe and fittings. See page 42.
- **BS EN 1455-1** – Plastic piping systems for soil and waste (low and high temperature) within the building structure. Acrylonitrile-butadiene-styrene (ABS). KM 548614.

Access Plug



Size	Colour	Code
32mm	<input type="checkbox"/> B <input type="checkbox"/> W <input type="checkbox"/> G <input type="checkbox"/> AG	WS30
40mm	<input type="checkbox"/> B <input type="checkbox"/> W <input type="checkbox"/> G <input type="checkbox"/> AG	WS31
50mm	<input type="checkbox"/> B <input type="checkbox"/> W <input type="checkbox"/> G	WS32

135° (45°) Branch



Size	Colour	Code
32mm	<input type="checkbox"/> B <input type="checkbox"/> W <input type="checkbox"/> G	WS42
40mm	<input type="checkbox"/> B <input type="checkbox"/> W <input type="checkbox"/> G	WS43

Male Adaptor



Size	Colour	Code
32mm	<input type="checkbox"/> W	WS63
40mm	<input type="checkbox"/> W	WS64

Pipe Clip



Size	Colour	Code
32mm	<input type="checkbox"/> B <input type="checkbox"/> W <input type="checkbox"/> G <input type="checkbox"/> AG	WS34
40mm	<input type="checkbox"/> B <input type="checkbox"/> W <input type="checkbox"/> G <input type="checkbox"/> AG	WS35
50mm	<input type="checkbox"/> B <input type="checkbox"/> W <input type="checkbox"/> G	WS36

Tank Connector



Size	Colour	Code
32mm	<input type="checkbox"/> W	WS60
40mm	<input type="checkbox"/> W	WS61

Female Adaptor



Size	Colour	Code
32mm	<input type="checkbox"/> W	WS66
40mm	<input type="checkbox"/> W	WS67

Reducer



Size	Colour	Code
40x32mm	<input type="checkbox"/> B <input type="checkbox"/> W <input type="checkbox"/> G <input type="checkbox"/> AG	WS38
50x32mm	<input type="checkbox"/> B <input type="checkbox"/> W <input type="checkbox"/> G <input type="checkbox"/> AG	WS39
50x40mm	<input type="checkbox"/> B <input type="checkbox"/> W <input type="checkbox"/> G	WS40

92½° (87½°) Cross Tee



Size	Colour	Code
40x32mm	<input type="checkbox"/> W	WS58

Level Invert Reducer



Size	Colour	Code
40x32mm	<input type="checkbox"/> W	WS50



32/40/50mm PUSH-FIT WASTE

Standard: BS EN 1451-1 Material: Polypropylene



3m Wastepipe



Size	Colour	Code
32mm	<input type="checkbox"/> B <input type="checkbox"/> W <input type="checkbox"/> G	WP01
40mm	<input type="checkbox"/> B <input type="checkbox"/> W <input type="checkbox"/> G	WP02
50mm	<input type="checkbox"/> G	WP03

Straight Coupling



Size	Colour	Code
32mm	<input type="checkbox"/> B <input type="checkbox"/> W <input type="checkbox"/> G	WP07
40mm	<input type="checkbox"/> B <input type="checkbox"/> W <input type="checkbox"/> G	WP08
50mm	<input type="checkbox"/> G	WP09





- Available in 32, 40 and 50mm pipe sizes.
- Polypropylene is a lightweight material, making it quick and easier to install compared to traditional metal pipe and fittings.
- Secure push-fit ring seal system that requires no solvent welding or tools. Simply push the pipe into the fitting for a watertight seal.
- Can be taken apart and reused.
- For easier installation use silicone lubricant. See page 42.
- Cost Effective - Cheaper than traditional metal pipe and fittings.
- **BS EN 1451-1** – Plastics piping systems for soil and waste discharge (low and high temperature) within the building structure. Polypropylene (PP).
- **BS EN 681** – Elastomeric seals. Material requirements for pipe joint seals used in water and drainage applications. Thermoplastic elastomers.

90° Bend



Size	Colour	Code
32mm	<input type="checkbox"/> B <input type="checkbox"/> W <input type="checkbox"/> G	WP10
40mm	<input type="checkbox"/> B <input type="checkbox"/> W <input type="checkbox"/> G	WP11
50mm	<input type="checkbox"/> G	WP12

92½° (87½°) Tee



Size	Colour	Code
32mm	<input type="checkbox"/> B <input type="checkbox"/> W <input type="checkbox"/> G	WP22
40mm	<input type="checkbox"/> B <input type="checkbox"/> W <input type="checkbox"/> G	WP23
50mm	<input type="checkbox"/> G	WP24

Reducer



Size	Colour	Code
40x32mm	<input type="checkbox"/> B <input type="checkbox"/> W <input type="checkbox"/> G	WP38
50x32mm	<input type="checkbox"/> G	WP39
50x40mm	<input type="checkbox"/> G	WP40

92½° (87½°) Bend



Size	Colour	Code
32mm	<input type="checkbox"/> B <input type="checkbox"/> W <input type="checkbox"/> G	WP14
40mm	<input type="checkbox"/> B <input type="checkbox"/> W <input type="checkbox"/> G	WP15
50mm	<input type="checkbox"/> G	WP16

Socket Plug



Size	Colour	Code
32mm	<input type="checkbox"/> B <input type="checkbox"/> W <input type="checkbox"/> G	WP30
40mm	<input type="checkbox"/> B <input type="checkbox"/> W <input type="checkbox"/> G	WP31
50mm	<input type="checkbox"/> G	WP32

90° Conversion Bend



Size	Colour	Code
32mm	<input type="checkbox"/> B <input type="checkbox"/> W <input type="checkbox"/> G	WP26
40mm	<input type="checkbox"/> B <input type="checkbox"/> W <input type="checkbox"/> G	WP27

135° (45°) Bend



Size	Colour	Code
32mm	<input type="checkbox"/> B <input type="checkbox"/> W <input type="checkbox"/> G	WP18
40mm	<input type="checkbox"/> B <input type="checkbox"/> W <input type="checkbox"/> G	WP19
50mm	<input type="checkbox"/> G	WP20

Pipe Clip



Size	Colour	Code
32mm	<input type="checkbox"/> B <input type="checkbox"/> W <input type="checkbox"/> G	WP34
40mm	<input type="checkbox"/> B <input type="checkbox"/> W <input type="checkbox"/> G	WP35
50mm	<input type="checkbox"/> G	WP36

Tank Connector



Size	Colour	Code
32mm	<input type="checkbox"/> B <input type="checkbox"/> W <input type="checkbox"/> G	WP60
40mm	<input type="checkbox"/> B <input type="checkbox"/> W <input type="checkbox"/> G	WP61



21.5mm OVERFLOW WASTE

Material: PVC-U



- 21.5mm overflow waste size commonly used with basins, baths, and WC cisterns.
- Designed to safely channel excess water away and prevent flooding.
- Made from durable PVC-U.
- Compatible with standard overflow pipework.
- Suitable for domestic and light commercial plumbing applications.

3m Overflow Pipe



Colour



Code

OS1

Straight Coupling



Colour



Code

OS10

90° Bend



Colour



Code

OS11

135° (45°) Bend



Colour



Code

OS12

90° Tee



Colour



Code

OS13

Straight Tank Connector



Colour



Code

OS14

Bent Tank Connector



Colour



Code

OS15

Pipe Clip



Colour



Code

OS16

32mm Overflow Waste Reducer



Colour



Code

OS17

40mm Overflow Waste Reducer



Colour



Code

OS18





FLEXIFLO

Material: Rubber

- For domestic, commercial or aquatic low-pressure applications only.
- To connect plain ended pipes of the same or different diameters.
- To make repairs to damaged pipework by using short sections of pipe plus EPDM fittings.

Benefits

- Suitable for above and below ground (non-adoptable) installations (excluding tees and elbows).
- Commercial kitchens - suitable for high temperature "shock" discharge, e.g. dishwasher.
- A watertight seal.
- Perfect for repairs, whether permanent or temporary.
- Ideal for working in tight or confined spaces, e.g. under a basin, sink, bath.

30-38mm Coupling



Colour	Code
G	WF07

38-48mm Coupling



Colour	Code
G	WF08

40-48mm Elbow



Colour	Code
G	WF11

105-116mm Elbow



Colour	Code
G	SP111





32/40mm COMPRESSION WASTE

Standard: BS EN 1451-1 **Material:** Polypropylene

• **Compression fitting**

Uses a threaded nut and compression ring (olive) to create a watertight seal.

• **Material**

Made from durable polypropylene, resistant to corrosion and chemicals.

• **Installation**

No specialist tools required; connections can be hand-tightened and adjusted as needed.

• **BS EN Standards**

Manufactured to meet BS EN 1451 standards for waste water fittings.

• **Usage**

Suitable for both domestic and light commercial plumbing systems. Connects to 32mm and 40mm waste pipes used in sinks, baths, and showers for effective drainage.

3m Wastepipe



Size	Colour	Code
32mm	<input type="checkbox"/> w	WP01
40mm	<input type="checkbox"/> w	WP02

0-90° Adjustable Bend



Size	Colour	Code
32mm	<input type="checkbox"/> w	WC14
40mm	<input type="checkbox"/> w	WC15

90° Conversion Bend



Size	Colour	Code
32mm	<input type="checkbox"/> w	WC26
40mm	<input type="checkbox"/> w	WC27

Straight coupling



Size	Colour	Code
32mm	<input type="checkbox"/> w	WC07
40mm	<input type="checkbox"/> w	WC08

135° (45°) Bend



Size	Colour	Code
32mm	<input type="checkbox"/> w	WC18
40mm	<input type="checkbox"/> w	WC19

Flexitube



Size	Colour	Code
32mm	<input type="checkbox"/> w	FT32
40mm	<input type="checkbox"/> w	FT40

90° Bend



Size	Colour	Code
32mm	<input type="checkbox"/> w	WC10
40mm	<input type="checkbox"/> w	WC11

Tee



Size	Colour	Code
32mm	<input type="checkbox"/> w	WC22
40mm	<input type="checkbox"/> w	WC23

Reducer



Size	Colour	Code
40x32mm	<input type="checkbox"/> w	WC38



32/40mm "CHROME" STYLE COMPRESSION WASTE

Standard: BS EN 1451-1 Material: Polypropylene

- Chrome finish**
 Provides a sleek, polished appearance, ideal for exposed pipework.
- Compression fitting**
 Uses a threaded nut and compression ring (olive) to create a watertight seal.
- Material**
 Made from durable polypropylene, resistant to corrosion and chemicals.
- Installation**
 No specialist tools required; connections can be hand-tightened and adjusted as needed.
- Usage**
 Suitable for both domestic and light commercial plumbing systems. Connects to 32mm and 40mm waste pipes used in sinks, baths, and showers for effective drainage.

3m Wastepipe



Size	Colour	Code
32mm	CH	CW01
40mm	CH	CW02

Tee



Size	Colour	Code
32mm	CH	CW22
40mm	CH	CW23

Straight coupling



Size	Colour	Code
32mm	CH	CW07
40mm	CH	CW08

Pipe Clip



Size	Colour	Code
32mm	CH	CW34
40mm	CH	CW35

90° Bend



Size	Colour	Code
32mm	CH	CW10
40mm	CH	CW11

Telescopic Bottle Trap 76mm seal



Size	Colour	Code
32mm	CH	CT37T
40mm	CH	CT47T





32/40mm WASTE TRAPS

Standard: BS EN 274 -1, BS EN 681 **Material:** Polypropylene

FloPlast waste traps are lightweight, chemical resistant plastic traps commonly used in domestic and light commercial plumbing. They are cost effective and ideal for standard sinks, baths, and appliances.

Waste traps are essential components in plumbing systems designed to maintain hygiene and prevent the entry of foul gases into buildings.



P Trap - 38mm Seal



Size	Colour	Code
32mm	<input type="checkbox"/> w	TP33
40mm	<input type="checkbox"/> w	TP43

P Trap - 76mm Seal



Size	Colour	Code
32mm	<input type="checkbox"/> w	TP37
40mm	<input type="checkbox"/> w	TP47

S Trap - 38mm Seal



Size	Colour	Code
32mm	<input type="checkbox"/> w	TS33
40mm	<input type="checkbox"/> w	TS43



Purpose and Function

- The primary function of a waste trap is to create a water seal that blocks sewer gases from passing back into the building.
- This water seal is typically maintained by a U-shaped bend in the pipe that retains a small amount of water after each use.

- Waste traps also help in catching debris such as hair, food particles, or small objects, preventing them from entering and clogging the drainage system.

How Waste Traps Work

- When water flows down the drain, it passes through the trap.

- A portion of the water stays in the bend of the trap, forming a seal.
- This seal acts as a barrier, stopping gases and odours from the sewer line from coming back up through the drain.

S Trap - 76mm Seal



Size	Colour	Code
32mm	<input type="checkbox"/> w	TS37
40mm	<input type="checkbox"/> w	TS47

Washing Machine Trap



Size	Colour	Code
40mm	<input type="checkbox"/> w	TW470

Double Bowl Sink Kit - 76mm Seal



Size	Colour	Code
40mm	<input type="checkbox"/> w	TW476

Telescopic P Trap - 76mm Seal



Size	Colour	Code
40mm	<input type="checkbox"/> w	TP47T

Washing Machine Kit - 76mm Seal



Size	Colour	Code
40mm	<input type="checkbox"/> w	TW471

Double Nozzle Trap - 76mm Seal



Size	Colour	Code
40mm	<input type="checkbox"/> w	TW477

Shallow Bath Trap - 38mm Seal



Size	Colour	Code
40mm	<input type="checkbox"/> w	TSB42

Single Bowl Sink Kit - 76mm Seal



Size	Colour	Code
40mm	<input type="checkbox"/> w	TW472

Appliance Half Traps - 76mm Seal



Size	Colour	Code
40mm	<input type="checkbox"/> w	TW473

Low Level Bath Trap - 50mm Seal



Size	Colour	Code
40mm	<input type="checkbox"/> w	TLB45

1½ Bowl Sink Kit



Size	Colour	Code
40mm	<input type="checkbox"/> w	TW475

Appliance Half Traps - 76mm Seal



Size	Colour	Code
40mm	<input type="checkbox"/> w	TW474



Bottle Trap - 38mm Seal



Size	Colour	Code
32mm	<input type="checkbox"/> w	TB33
40mm	<input type="checkbox"/> w	TB43

Telescopic Bottle Trap - 76mm Seal



Size	Colour	Code
32mm	<input type="checkbox"/> w	TB37T
40mm	<input type="checkbox"/> w	TB47T

Trap Height Adjustor



Size	Colour	Code
32mm	<input type="checkbox"/> w	TA33
40mm	<input type="checkbox"/> w	TA43

Bottle Trap - 76mm Seal



Size	Colour	Code
32mm	<input type="checkbox"/> w	TB37
40mm	<input type="checkbox"/> w	TB47

Telescopic Pedestal Trap - 76mm Seal



Size	Colour	Code
32mm	<input type="checkbox"/> w	TD372T
40mm	<input type="checkbox"/> w	TD374T

Trap Seal Kits (4 piece)



Size	Colour	Code
32mm	<input type="checkbox"/> w	TK32
40mm	<input type="checkbox"/> w	TK40

Anti Vac Bottle - 76mm Seal



Size	Colour	Code
32mm	<input type="checkbox"/> w	TB37A
40mm	<input type="checkbox"/> w	TB47A

Plain Swivel Elbow



Size	Colour	Code
32mm	<input type="checkbox"/> w	WC26
40mm	<input type="checkbox"/> w	WC27

Washing Machine Tee



Size	Colour	Code
40mm	<input type="checkbox"/> w	TWT41



Plastic Grid Shower Traps



Size	Colour	Code
40x19mm	<input type="checkbox"/> w	TH41

Plastic Grid Shower Traps



Size	Colour	Code
40x50mm	<input type="checkbox"/> w	TH51

Chrome Grid Shower Traps



Size	Colour	Code
40x19mm	<input type="checkbox"/> w	TH43

Chrome Grid Shower Traps



Size	Colour	Code
40x50mm	<input type="checkbox"/> w	TH53

Washing Machine/Dishwasher Nozzle



Size	Colour	Code
40mm	<input type="checkbox"/> w	THC40

Overflow & Hose Connector



Size	Colour	Code
40mm	<input type="checkbox"/> w	THC41





LUBRICANT AND SOLVENT CEMENT

FloPlast offers a specialised range of solvent cements and lubricants designed for the secure installation and maintenance of plastic plumbing systems, particularly for soil, waste, and underground drainage products.

SOLVENT CEMENT

- Forms a strong and permanent joint.
- Provides leak-free seals when used correctly.
- Fast bonding and cure times.
- Suitable for PVC and ABS plastics.
- Material safety data sheets available on website.

SILICONE LUBRICANT

- Resistant to water and moisture.
- Safe for use on most plastics.
- Operates across a wide temperature range.
- Aids the installation of plumbing systems.
- Material safety data sheets available on website.

Lubricant Gel



Size	Code
800g	SG800

Silicone Grease



Size	Code
100g	SG100

Silicone Lubricant Spray



Size	Code
200ml	SL200

Solvent Cement



Size	Code
125ml	SC125

Solvent Cement



Size	Code
250ml	SC250

NUMBER OF JOINTS ACHIEVABLE TO LUBRICATE (for guidance only)

SG100 SILICONE GREASE				
32mm	40mm	50mm	110mm	
160	120	100	60	
SG800 LUBRICANT GEL				
32mm	40mm	50mm	110mm	
1200	950	800	450	
SL200 SILICONE SPRAY				
32mm	40mm	50mm	110mm	
600	420	400	225	

NUMBER OF JOINTS ACHIEVABLE TO CEMENT (for guidance only)

SC125 SOLVENT CEMENT				
32mm	40mm	50mm	110mm	
27	27	27	7	
SC250 SOLVENT CEMENT				
32mm	40mm	50mm	110mm	
55	55	5	15	



COMPATIBILITY CHART

This compatibility chart provides a clear, easy-to-read reference for plumbers, contractors, and DIY enthusiasts.

It highlights which manufacturer products can be joined safely.

Use this chart to ensure your plumbing installations meet performance standards.

MANUFACTURER	110mm Above Ground Drainage	Push-Fit Waste (PP)			Solvent Weld Waste (ABS)		
		32mm	40mm	50mm	32mm	40mm	50mm
HEPWORTH	✓	✓	✓	✓	✓	✓	✓
BRETT MARTIN	✓	✓	✓	✓	✓	✓	✓
OSMA	✓	✓	✓	✓	✓	✓	✓
POLYPIPE TERRAIN	✓	✓	✓	✓	✓	✓	✓
MARLEY	✓	✓	✓	✓	✓	✓	✓
HUNTER	✓	✓	✓	✓	✓	✓	✓

ACCREDITATION

- 110mm Ring Seal Soil System PVC-U BS EN 1329-1.
- 110mm Solvent Weld Soil System PVC-U BS EN 1329-1.
- Air Admittance Valves BS EN 12380.
- W.C Pan Connectors Polypropylene (PP) BS EN 1329-1/BS 5627.
- Push-Fit Waste System Polypropylene (PP) BS EN 1451-1.
- ABS Solvent Weld Waste System BS EN 1455-1.
- "Chrome" Style/White Unicom Universal Compression Waste System BS EN 1451-1.
- "Chrome" Style/White Waste Traps BS EN 274.
- 21.5mm Overflow Waste System.

Further guidance should also be sought by reference to:

- BS EN 12056 Gravity Drainage Systems inside Buildings.
 - Code of practice for above ground drainage and sanitary appliances.
- The Building Regulations 2000**
- Approved Document H - Drainage and Waste Disposal:2002
 - Approved Document B - Fire Safety:2000.



Roofline, Window and
Cladding Systems



Rainwater
Systems



Soil & Waste
Systems



Underground Drainage
Systems



MDPE
Systems



Hot & Cold
Plumbing Systems

FloPlast Limited.

Castle Road,
Eurolink Business Park,
Sittingbourne,
Kent, ME10 3FP
United Kingdom

 01795 431731 - Reception
 01795 421422 - Sales
 01795 431188
 technical@floplast.co.uk
 sales@floplast.co.uk
 www.floplast.co.uk

 @floplastlimited
 /FloPlast Ltd
 /FloPlast Ltd
 @FloPlastLtd

All rights reserved in all media. No part of this document may be reproduced in any form, copied or stored electronically, whole or in part without prior written permission. Every effort has been made to verify all information. Products may vary in appearance from those pictured. All information is correct at the time of going to print and may change without notice.