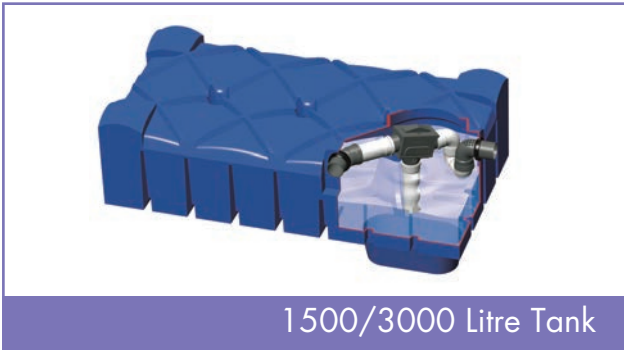


StormSaver

Rainwater Harvesting System : Product Data Sheet

Shallow Dig (SD) Tank



1500/3000 Litre Tank



5000 Litre Tank



7500 Litre Tank

PRODUCT DESCRIPTION

The StormSaver Shallow Dig (SD) storage tanks are ideal for storage of rainwater for domestic rainwater harvesting systems.

Combined with the control panel unit, the tank range provides a simple and cost effective solution to installing a rainwater system in any home.

Rainwater can be harvested and reused for a number of applications including toilet flushing, laundry and garden watering and can reduce household water consumption by up to 50%.

- Minimum installation depth
- Less earth to excavate and remove from site
- One piece, light and easy to manoeuvre without the need for plant equipment.
- No concrete surround required.
- Suitable for high water tables.
- Integral leaf filter, overflow siphon and inlet calmer all pre-fitted.
- Durable and economical.
- Access for maintenance is easier than other circular tanks.

MATERIALS & MANUFACTURE

The tank range is manufactured from high quality rotationally moulded Polyethylene. Being manufactured all in one piece makes it easier to deliver, manoeuvre and install. The tanks carry a 25 year guarantee. The unique anti buoyancy technology applied to the design and manufacture means it can be installed in high water table locations so long as the earth coverage requirements are followed.



INSTALLATION

As the height of the tanks range from as little as 1015mm to 1415mm the hole needed in the ground is much less than for circular or oval tanks. Access for maintenance is also easier.

This also means that the hole can be dug by hand if a mechanical digger is not available and there is no need to shore up the sides. The structural strength of the tank range means there is no need for concrete backfill, again reducing cost and easing installation.

TECHNICAL DETAILS

* Sump basin height is 100mm in addition.

Size (Litres)	Length (mm)	Width (mm)	Height Tank Body (mm)	Height Inc. 250mm Shaft (mm)	Weight (kg)	Inflow (mm)	Overflow (mm)
1500	2400	1200	650*	1015	80**	330	385
3000	2400	2400	650*	1015	170**	330	385
5000	2960	2220	920*	1350	250**	330	385
7500	3340	2310	1125	1415	310**	325	375

** Weight without integral leaf filter and inlet calmer. Add 5kg for tanks which include these items.

ACCESSORIES



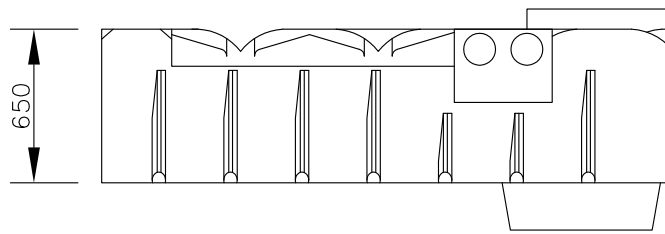
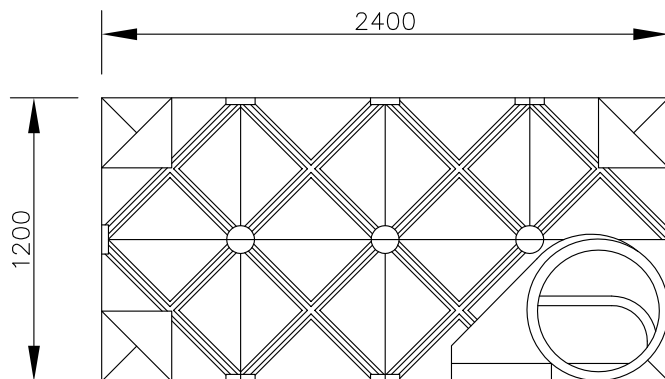
Either a 235mm or 635mm entrance shaft must be used with the tank. A spacer ring can be used to extend the 235mm shaft. Vehicle duty lids and 635mm entrance shafts are available on request for driveways.

ADDITIONAL PRODUCTS

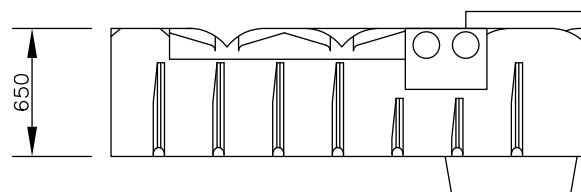
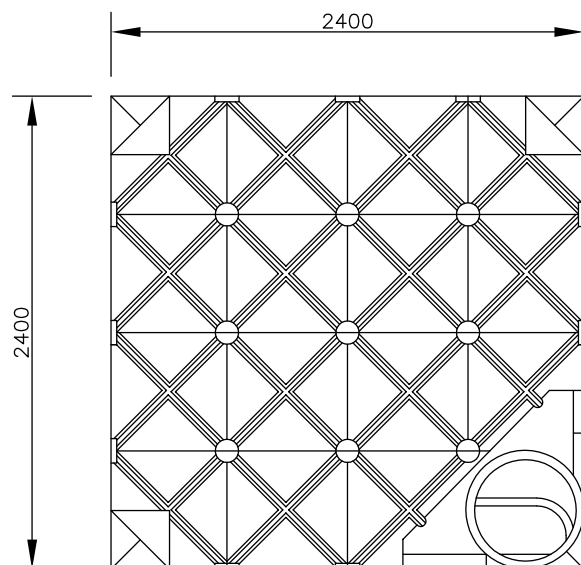
FloPlast offer a wide range of products. Please contact our sales department on 01795 431731 or visit www.floplast.co.uk for more information.

TECHNICAL DRAWINGS

1500L Shallow Dig Tank

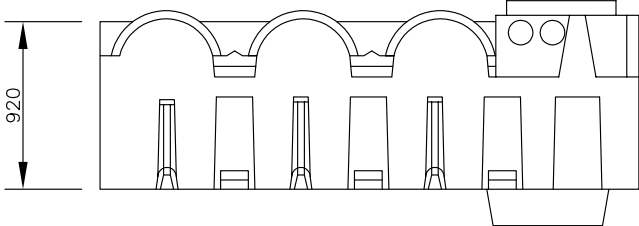
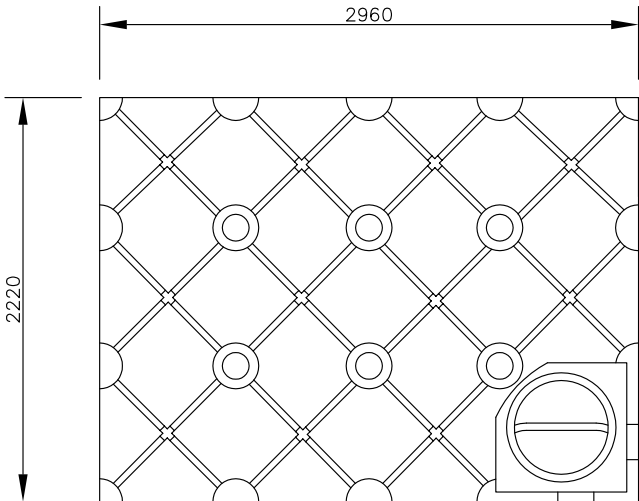


3000L Shallow Dig Tank



TECHNICAL DRAWINGS

5000L Shallow Dig Tank



7500L Shallow Dig Tank

