

Access Covers for Inspection Chambers



Access Covers

FloPlast have a range of access covers available for both 110mm and 160mm systems. Access is very important on all installations for testing, inspection, and removal of any blockage or debris.

System Benefits

- Simple and quick installation
- Robust fittings enabling to take loadings of up to a maximum of 35kN.
- Enables quick access for testing or inspection
- Easy access to rodding point
- D930 and D931 conform to Document H of the Building Regulations

Where Injection Chambers are to be adopted, reference is to be made to Sewers for Adoption 7th Edition (SA7).

Large (LIC) 450mm Diameter Inspection Chamber Access Covers

110mm/160mm Fittings

450mm plastic cover and frame



Code
D930
(35kN)
For use up to
1.2 metres only

450mm plastic cover and frame-350mm restricted access



Code
D931
(35kN)
For use with Inspection
Chambers over 1.2 metres
deep up to 3 metres.
Can also be used below
1.2 metres if a sealed
cover is required.

Cast Iron cover & plastic frame



Code
D923
(For replacement
purposes only)



To conform with document H of the Building Regulations H2000 use D930 or D931.

Mini (MAC) 300mm Diameter Inspection Chamber Access Covers

110mm Fittings

340mm sealed screw down cover and frame



Code

D830

(35kN)

NEW Square to Round Block Paving Chamber Covers

FloPlast's recessed square to round covers are suitable for block paving and slabbed areas to give a neat top edge design.

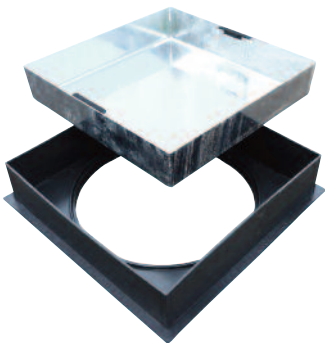
- Significantly reduced installation time due to square frame
- For loading up to 10 tonnes
- Paviers can be cut to suit profile of the frame whilst the circular opening with it's universal spigot locates directly onto the chamber riser.
- Fits directly onto FloPlast's 300mm/450mm Risers
- Solid steel base plate
- Recessed lids with robust lifting eyes
- Angled inner of lid to aid cover removal

Square/Round Block Paving Cover

Size Code

450mm D933

300mm D932



Code	Diameter Clear Opening	Frame Depth
D933	450mm	83mm
D932	320mm	83mm

Recessed tray is able to receive up to 40mm of concrete/ floor finish infill.

www.floplast.co.uk

