

Shallow Dig (SD) Tank Product Data Sheet

Product Description

The Stormsaver Shallow Dig (SD) storage tanks are ideal for storage of rainwater for domestic rainwater harvesting systems.

Combined with our Monsoon Eco or Monsoon Favorit unit, the SD range of tanks provides a simple and cost effective solution to installing a rainwater system in any home.

Rainwater can be harvested and re-used for a number of applications including toilet flushing, laundry and garden watering and can reduce household water consumption by up to 50%.

Product Benefits

- Minimum installation depth
- Less earth to excavate and remove from site
- One piece, light and easy to manoeuvre without the need for plant equipment
- No concrete surround required
- Suitable for high water tables
- Integral leaf filter, overflow siphon and inlet calmer all pre-fitted
- Durable and economical
- Access for maintenance is easier than other circular tanks

Materials & Manufacture

The SD range is manufactured from high quality rotationally moulded Polyethylene. Being manufactured all in one piece makes it easy to deliver, manoeuvre and install.

The tanks carry a 25 Year Guarantee!

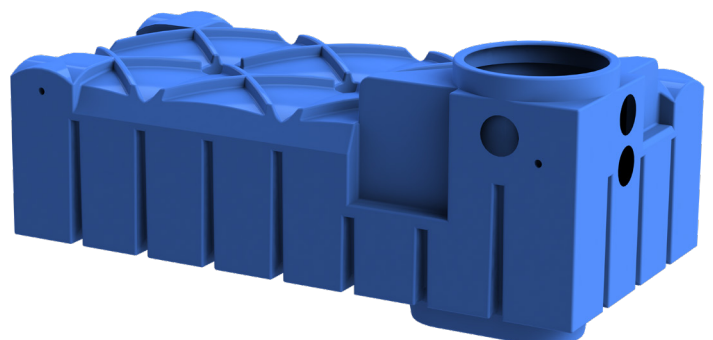
The unique anti-buoyancy technology applied to the design and manufacture means it can be installed in high water table locations so long as the earth coverage requirements are followed.

Installation

As the height of the tanks range from as little as 1015mm to 1415mm the hole needed in the ground is much less than for standard circular or oval tanks. Access for maintenance is also easier.

This also means that the hole can be dug by hand if a JCB is not available and there is no need to shore up the sides.

The structural strength of the SD range means there is no need to concrete it in, again reducing cost and easing installation.



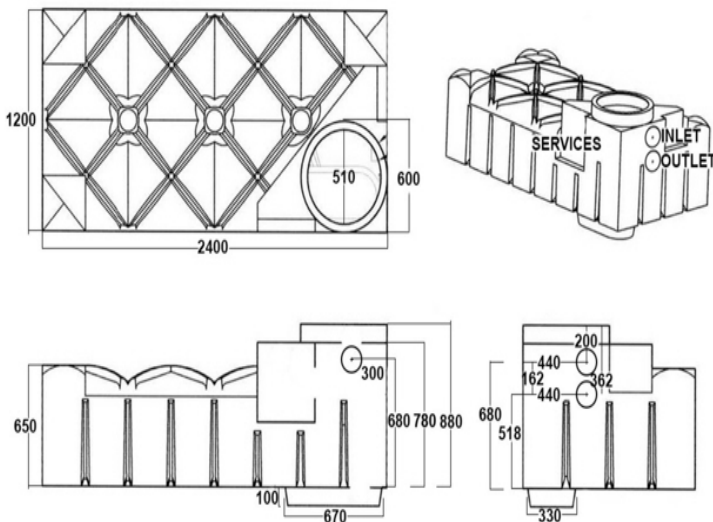
Technical Details

Size	Length	Width	Height (tank body)	Height (inc 235mm turret)	Weight	Inlet & overflow sizes	Service duct size	Height from base of tank to inlet	Height from base of tank to overflow
1500L	2400mm	1200mm	650mm*	1115mm	80kg**	110mm	110mm	680mm	518mm
3000L	2400mm	2400mm	650mm*	1115mm	170kg**	110mm	110mm	680mm	518mm
5000L	2960mm	2220mm	920mm*	1450mm	250kg**	110mm	110mm	1015mm	853mm
7500L	3340mm	2310mm	1125mm	1520mm	310kg**	110mm	110mm	1085mm	923mm

* Sump basin height is 100mm in addition. ** Weight without integral leaf filter and inlet calmer. Add 5kg for tanks which include these items.

Maximum depth of ALL tanks is 1.5m from the top of the tank to finished ground level

Technical Drawing (1500L)



Accessories



235mm
Entrance Shaft



Pedestrian duty lid



635mm
Entrance Shaft



600mm
Spacer Ring

Either a 235mm or 635mm entrance shaft must be used with the SD tank. A spacer ring can be used to extend the 235mm shaft. Vehicle duty lids and 635mm entrance shafts are available on request for driveways.

Complimentary Products

Stormsaver offer a wide range of products. Please contact the FloPlast sales team to find out more about the range:

- Monsoon Eco and Monsoon Favorit control units low energy, compact control units housing all technology necessary to control your rainwater system and mains water back up

- Floating suction filter kits – and other fittings to make your rainwater harvesting system complete
- Suction Hose supplied in 20m or 40m lengths to connect your floating suction filter in your SD tank to the control unit in your home
- Commercial rainwater harvesting solutions